

MiScope[®] for Macintosh OS X

The digital microscope that fits in the palm of your hand

The MiScope (pronounced My-Scope) combines a digital movie camera, precision optics and LED lighting in a microscope that fits in the palm of your hand. 40 - 140X magnification lets you zoom in on the fine details of insects, textiles, electronics or anything else too small to see. Place the MiScope over the object, and comfortably view the image on your computer screen, instead of straining to look into a tiny eyepiece. Capture images or movies, easily add labels, make measurements and even draw right on the live video image.

The MiScope connects to your computer's USB port where it's always ready to use. Grab a laptop and take the MiScope anywhere. Use it to show your products to a customer, inspect a valuable collectable right in the store, or take it into the backyard and get a closer look at the insects who share our world.

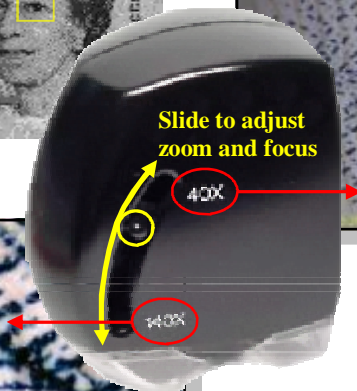
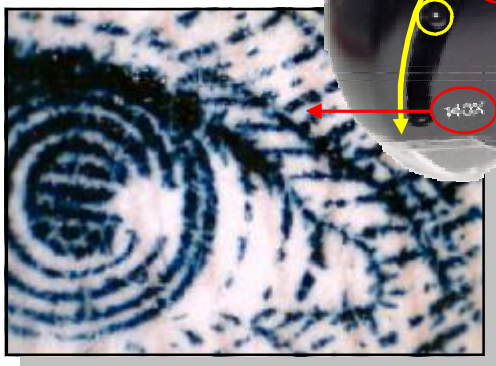


Features

- Includes Macintosh and PC software
- View live images on the computer monitor
- 40 — 140x magnification
- Completely portable with a laptop computer
- Save still images, movies and time lapse
- Labels, markers, time stamps, measurement
- Draw and overlay graphics on the live image



British five pound note



Applications

- Education (Biology, Life Sciences, Geology)
- Collectors (Stamps, Coins, Cards, Artwork)
- Forensics (Crime Scene, Documents)
- Quality Inspection (Electronics, Surface Finish, Textiles, Metals, Plastics)
- Graphic Arts and Printing
- Entomology

Zarbeco, U.C.
creative imaging solutions

12 Ridge Road, Randolph, NJ 07869 USA
Phone: 973-989-2673 Fax: 973-989-2674
sales@zarbeco.com www.zarbeco.com

MiScope[®] — A new way to see the world

Sample Images



Orb spider



Watch mechanism



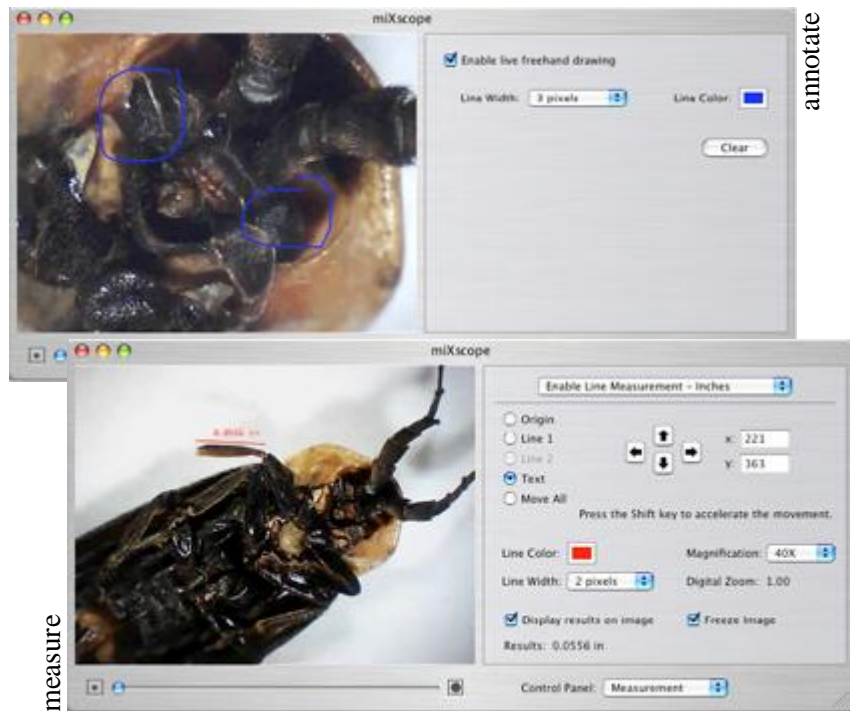
Fabric sample



Official document

Mac Software Features

- Display live video.
- Capture still images, movies and time lapse.
- Live digital zoom.
- Interactively adjust camera brightness, contrast and color.
- Resizable image window.
- Measure distance and angles directly on the live image.
- Overlay labels, markers, time stamps and any saved image over the live image.
- Draw freehand on the live image.
- Frame average to reduce noise and enhance image clarity.



MiScope[®] Specifications

- I Image Sensor: 1/3" CMOS
- I Pixels: 640 x 480
- I Power: USB port
- I Light Source: super-bright LEDs
- I Field of View
 - @40X: 6 x 8 mm
 - @140X: 1.5 x 2 mm
- I Resolution: 4 microns

Computer Requirements

Macintosh G3 500MHz, OS X 10.2+,
128 MB memory, USB port,
Screen resolution 800 x 600 or greater

Accessories

MiSC-HC Watertight hard case with custom foam

MiSC-PRO MiScope Pro kit includes hard case, light
-MAC table & LED flashlight for advanced lighting